


RISE PARK PRIMARY AND NURSERY SCHOOL



Low Level Concern Policy

March 2026

Signed by Chair of Committee	
Print Name	Jeanette Kirkby
Date	March 2026
Date of review	September 2026

Low-Level Concerns Policy

Rise Park Primary and Nursery School

Contents

1. Introduction	2
2. Summary	2
3. Keeping Children Safe in Education September 2025	2
4. Clarity around Allegation vs Low-Level Concern vs Appropriate Conduct	3
5. Storing and use of Low-Level Concerns and follow-up information	4
6. Process to follow when a Low-Level Concern is raised	5
7. Key Reference Document	6
8. Low Level Concern Form.....	6

1. Introduction

At Rise Park Primary and Nursery School, we take safeguarding very seriously. This includes ensuring that adults who work with children do so in a way that is in accordance with the ethos and policies set out by the school, including the Staff Code of Conduct. This policy sets out the detail and processes for staff regarding low-level concerns they may have.

2. Summary

It may be possible that a member of staff acts in a way that does not cause risk to children, but is however inappropriate. A member of staff who has a concern about another member of staff should inform the Head Teacher about their concern using a Low-Level Record of Concern Form. If the Head Teacher cannot be contacted, the Chair of Governors should be contacted instead.

3. Keeping Children Safe in Education September 2025

The following is taken from Keeping Children Safe in Education September 2025

428. *As part of their whole school approach to safeguarding, schools and colleges should ensure that they promote an open and transparent culture in which all concerns about all adults working in or on behalf of the school or college (including supply teachers, volunteers and contractors) are dealt with promptly and appropriately.*

429. *Creating a culture in which all concerns about adults are shared responsibly and with the right person, recorded and dealt with appropriately, is critical. If implemented correctly, this should:*

- *enable schools and colleges to identify inappropriate, problematic or concerning behaviour early*
- *minimise the risk of abuse, and*
- *ensure that adults working in or on behalf of the school or college are clear about professional boundaries and act within these boundaries, and in accordance with the ethos and values of the institution.*

What is a low level concern is

430. The term 'low-level' concern does not mean that it is insignificant. A low-level concern is any concern – no matter how small, and even if no more than causing a sense of unease or a 'nagging doubt' - that an adult working in or on behalf of the school or college may have acted in a way that:

- is inconsistent with the staff code of conduct, including inappropriate conduct outside of work; and
- does not meet the allegations threshold or is otherwise not considered serious enough to consider a referral to the LADO.

Examples of such behaviour could include, but are not limited to:

- being over friendly with children
- having favourites
- taking photographs of children on their mobile phone, contrary to school policy
- engaging with a child on a one-to-one basis in a secluded area or behind a closed door, or
- humiliating children

431. Such behaviour can exist on a wide spectrum, from the inadvertent or thoughtless, or behaviour that may look to be inappropriate, but might not be in specific circumstances, through to that which is ultimately intended to enable abuse.

432. Low-level concerns may arise in several ways and from a number of sources. For example: suspicion; complaint; or disclosure made by a child, parent or other adult within or outside of the organisation; or as a result of vetting checks undertaken.

433. It is crucial that all low level-concerns are shared responsibly with the right person and recorded and dealt with appropriately. Ensuring they are dealt with effectively should also protect those working in or on behalf of schools and colleges from becoming the subject of potential false low-level concerns or misunderstandings.

4. Clarity around Allegation vs Low-Level Concern vs Appropriate Conduct

Concern or allegation that may meet harm threshold

Behaviour which indicates that an adult who works with children has:

- behaved in a way that has harmed a child, or may have harmed a child; and/or
- possibly committed a criminal offence against or related to a child; and/or
- behaved towards a child or children in a way that indicates they may pose a risk of harm to children; and/or
- behaved or may have behaved in a way that indicates they may not be suitable to work with children.

Low-level concern

Does not mean that it is insignificant. A low-level concern is any concern – no matter how small, and even if no more than causing a sense of unease or a 'nagging doubt' – that an adult working with children may have acted in a way that:

- is inconsistent with an organisation's staff code of conduct, including inappropriate conduct outside of work; and
- does not meet the harm threshold, or is otherwise not serious enough to merit a referral to the LADO.

Appropriate conduct

Behaviour which is entirely consistent with the organisation's staff code of conduct, and the law.

5. Storing and use of Low-Level Concerns and follow-up information

Low level concern forms and follow-up information will be stored securely within the school's safeguarding systems, with access only by the leadership team. This will be stored in accordance with the school's GDPR and data protection policies.

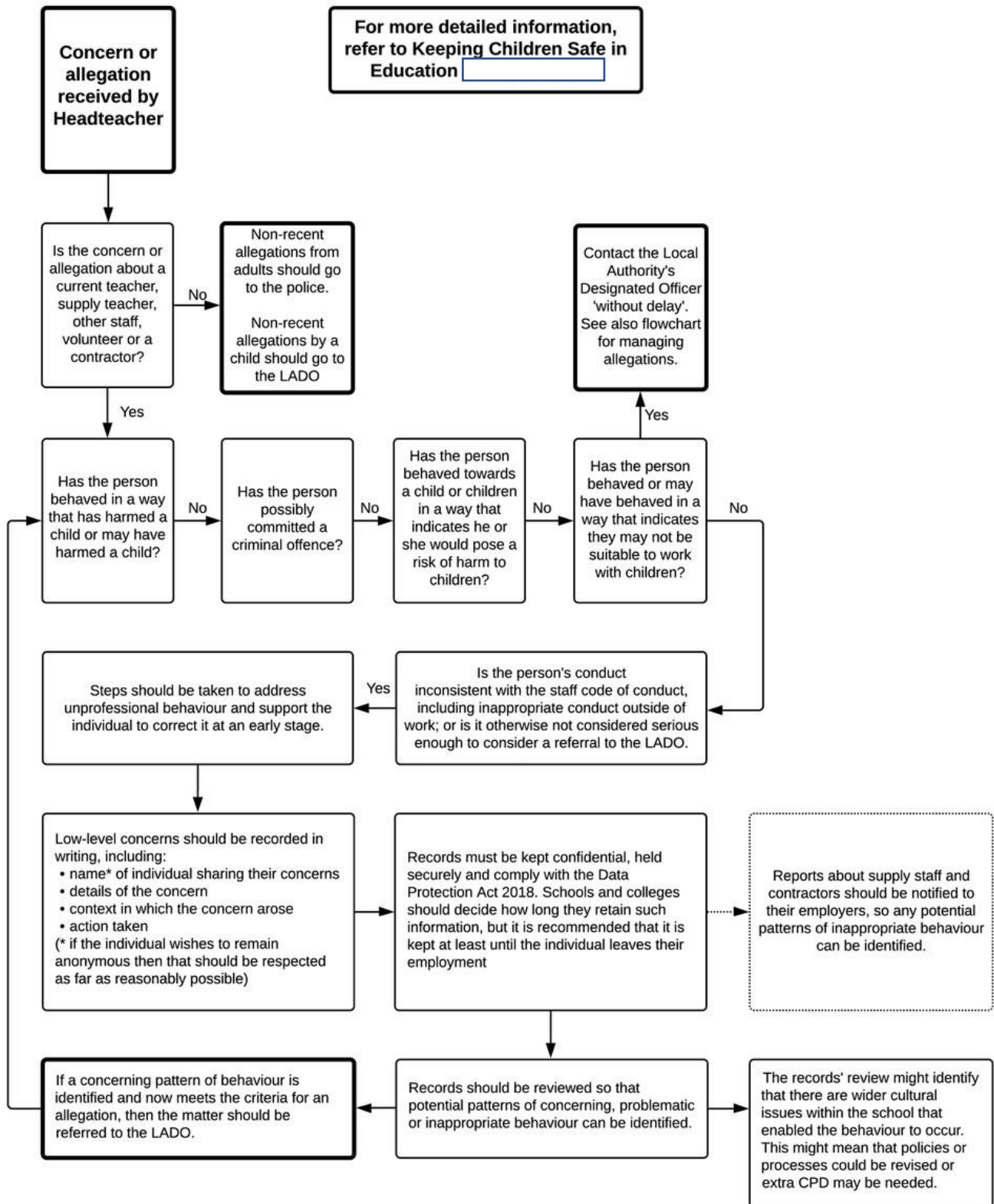
The staff member(s) reporting the concern must keep the information confidential and not share the concern with others apart from the Head Teacher or those aware in the senior leadership team.

Low-Level Concerns will not be referred to in references unless they have been formalised into more significant concerns resulting in disciplinary or misconduct procedures.

Whenever staff leave Rise Park Primary and Nursery School, any record of low-level concerns which are stored about them will be reviewed as to whether or not that information needs to be kept. Consideration will be given to:

- (a) whether some or all of the information contained within any record may have any reasonably likely value in terms of any potential historic employment or abuse claim so as to justify keeping it, in line with normal safeguarding records practice; or
- (b) if, on balance, any record is not considered to have any reasonably likely value, still less actionable concern, and ought to be deleted accordingly.

6. Process to follow when a Low-Level Concern is raised



What is a low level concern?

The term 'low-level' concern does not mean that it is insignificant, it means that the behaviour towards a child does not meet the threshold set out at KCSIE (2021) paragraph 338. A low-level concern is any concern – no matter how small, and even if no more than causing a sense of unease or a 'nagging doubt' - that an adult working in or on behalf of the school or college may have acted in a way that:

- is inconsistent with the staff code of conduct, including inappropriate conduct outside of work; and
- does not meet the allegations threshold or is otherwise not considered serious enough to consider a referral to the LADO.

7. Key Reference Document

Read this document for further information about Low-Level Concerns, which is referenced in KCSIE 2025.

[FARRER&CO Developing and implementing a low-level concerns policy: a guide for organisations which work with children](#)

8. Low Level Concern Form

This form will be available to staff via:

- Z:\Teaching\1 Administration
- Embedded form see here:



**Reporting Low
Level Concerns Form**

- The School Office have blank copies
- DSLs have blank copies
- The Senior Leadership Team have blank copies

Policy created on 17.03.26