

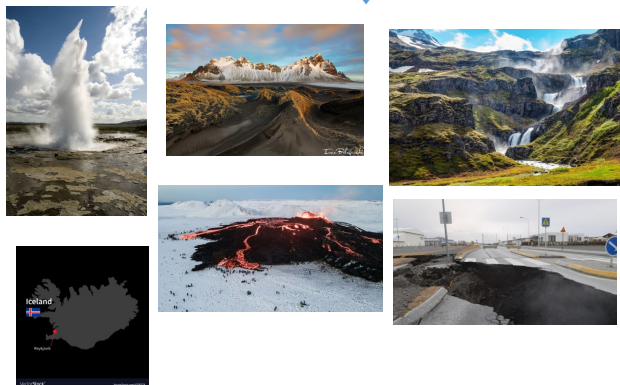
## Europe— Iceland



Key Questions: How is Iceland different to the UK? What are the geographical similarities and differences of Iceland and the United Kingdom?

### Key Facts:

- ◆ Reykjavik is a capital city.
- ◆ In Reykjavik the temperature ranges from 1– 11 degrees Celsius.
- ◆ There are mountains, ice fields, fjords, glaciers, volcanoes, lava fields and Geysers.
- ◆ They have lots of earthquakes.
- ◆ Europe is a continent made up of 50 countries.



### Map of Europe and Iceland:

Europe:



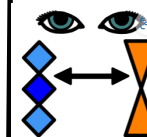
Iceland:



Where is Iceland?



### Key Vocabulary:



Comparison— identifying similarities and differences between places.



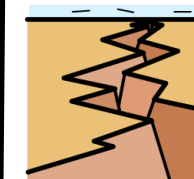
Fjord— a long, narrow body of water.



Geyser— Hot pressure that erupts.



Glacier— A huge thick mass of ice.



Earthquake— A sudden violent shaking of the ground.

## Welcome back to Year 5!

We hope that you have all had a fantastic break over Christmas and New Year, and that you're looking forward to a great Spring term as you continue your work in Year 5. Here are a few things to bear in mind:

- We continue to assess the children with weekly spellings. Your child will be given a new set of spellings each Monday to practice. A weekly spelling test will also take place on a Monday. You will find the spelling bookmark inside your child's organiser.
- We will continue to use our organisers to share with you how we support your child's reading in school. **Children should be reading to an adult at home at least three times a week and this must be recorded in their diary.** Teachers will monitor this and those who have achieved this target will be rewarded with an extra playtime on a Friday.
- Although the children took their times tables tests in Year 4, we are continuing to practice them in our Maths lessons each week. Please help your child with these at home as part of their homework.
- PE will continue to run on a Thursday afternoon, and your child should have their full school PE kit with them each week. **There is no need for your child to take their kit home until half term.**

## Homework Project

As you can see, this term Year 5 geography topic is Iceland. The children will be researching, writing and creating a range of projects linked to this country in school.

We would like the children to research a **different European country** and present information about it to the rest of the class in lesson. It would be great if the children could choose some less well-known European countries to research!

This information can be presented as:

- A poster
- An information leaflet
- A PowerPoint presentation
- A postcard

The hand in date will be Monday 10th February.

**Your child will receive 5 stampers for handing a project in!**

Please name / label all projects clearly!

If you require any resources to help with the project, please let a member of staff know.

Many thanks for your ongoing support.

Mr. Shadbolt and Miss Cureton

## Important Dates

Add these to your diary / calendar!

**Monday 6th January** - Spring 1 begins

**Wednesday 15th January** - Off-site visit to Magna Science Adventure Centre in Rotherham, linked to Science topic.

**Wednesday 5th February** - Year 5 curriculum showcase (after-school)

**Friday 14th February** - Spring 1 ends

**Monday 17th - Friday 21st February** - Half-term

**Monday 24th February** - Spring 2 begins

**Wednesday 26th February & Thursday 27th February** - Parents Evenings

**Tuesday 25th March** - Year 5 Mother's Day event

**Friday 4th April** - Last day of Spring term; Easter Egg competition

Any other information about dates and events that may get added to the calendar will be sent out to you via text message from the school office.

# Year 5: Geography Spring 1



## Europe– Iceland

Key Questions: How is Iceland different to the UK? What are the geographical similarities and differences of Iceland and the United Kingdom?

### Key Facts:

- ◆ Reykjavik is a capital city.
- ◆ There are mountains, ice fields, fjords, glaciers, volcanoes, lava fields and Geysers.
- ◆ They have lots of earthquakes.



### Europe:



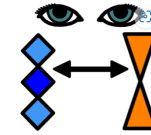
### Iceland:



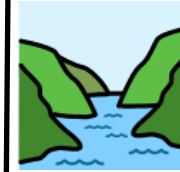
### Where is Iceland?



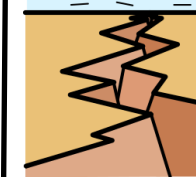
### Key Vocabulary:



Comparison– What is the same and what is different?



Fjord– a long, narrow body of water.



Earthquake– A sudden violent shaking of the ground.

## Welcome back to Year 5!

We hope that you have all had a fantastic break over Christmas and New Year, and that you're looking forward to a great Spring term as you continue your work in Year 5. Here are a few things to bear in mind:

- We continue to assess the children with weekly spellings. Your child will be given a new set of spellings each Monday to practice. A weekly spelling test will also take place on a Monday. You will find the spelling bookmark inside your child's organiser.
- We will continue to use our organisers to share with you how we support your child's reading in school. **Children should be reading to an adult at home at least three times a week and this must be recorded in their diary.** Teachers will monitor this and those who have achieved this target will be rewarded with an extra playtime on a Friday.
- Although the children took their times tables tests in Year 4, we are continuing to practice them in our Maths lessons each week. Please help your child with these at home as part of their homework.
- PE will continue to run on a Thursday afternoon, and your child should have their full school PE kit with them each week. **There is no need for your child to take their kit home until half term.**

## Homework Project

As you can see, this term Year 5 geography topic is Iceland. The children will be researching, writing and creating a range of projects linked to this country in school.

We would like the children to research a **different European country** and present information about it to the rest of the class in lesson. It would be great if the children could choose some less well-known European countries to research!

This information can be presented as:

- A poster
- An information leaflet
- A PowerPoint presentation
- A postcard

The hand in date will be Monday 10th February.

**Your child will receive 5 stampers for handing a project in!**

Please name / label all projects clearly!

If you require any resources to help with the project, please let a member of staff know.

Many thanks for your ongoing support.

Mr. Shadbolt and Miss Cureton

## Important Dates

Add these to your diary / calendar!

**Monday 6th January** - Spring 1 begins

**Wednesday 15th January** - Off-site visit to Magna Science Adventure Centre in Rotherham, linked to Science topic.

**Wednesday 5th February** - Year 5 curriculum showcase (after-school)

**Friday 14th February** - Spring 1 ends

**Monday 17th - Friday 21st February** - Half-term

**Monday 24th February** - Spring 2 begins

**Wednesday 26th February & Thursday 27th February** - Parents Evenings

**Tuesday 25th March** - Year 5 Mother's Day event

**Friday 4th April** - Last day of Spring term; Easter Egg competition

Any other information about dates and events that may get added to the calendar will be sent out to you via text message from the school office.

# Year 5: Geography Spring 1

## Europe– Iceland

Key Questions: How is Iceland different to the UK?

### Europe:



### Iceland:



### Where is Iceland?



## Welcome back to Year 5!

We hope that you have all had a fantastic break over Christmas and New Year, and that you're looking forward to a great Spring term as you continue your work in Year 5. Here are a few things to bear in mind:

- We continue to assess the children with weekly spellings. Your child will be given a new set of spellings each Monday to practice. A weekly spelling test will also take place on a Monday. You will find the spelling bookmark inside your child's organiser.
- We will continue to use our organisers to share with you how we support your child's reading in school. **Children should be reading to an adult at home at least three times a week and this must be recorded in their diary.** Teachers will monitor this and those who have achieved this target will be rewarded with an extra playtime on a Friday.
- Although the children took their times tables tests in Year 4, we are continuing to practice them in our Maths lessons each week. Please help your child with these at home as part of their homework.
- PE will continue to run on a Thursday afternoon, and your child should have their full school PE kit with them each week. **There is no need for your child to take their kit home until half term.**

## Homework Project

As you can see, this term Year 5 geography topic is Iceland. The children will be researching, writing and creating a range of projects linked to this country in school.

We would like the children to research a **different European country** and present information about it to the rest of the class in lesson. It would be great if the children could choose some less well-known European countries to research!

This information can be presented as:

- A poster
- An information leaflet
- A PowerPoint presentation
- A postcard

The hand in date will be Monday 10th February.

**Your child will receive 5 stampers for handing a project in!**

Please name / label all projects clearly!

If you require any resources to help with the project, please let a member of staff know.

Many thanks for your ongoing support.

Mr. Shadbolt and Miss Cureton

## Important Dates

Add these to your diary / calendar!

**Monday 6th January** - Spring 1 begins

**Wednesday 15th January** - Off-site visit to Magna Science Adventure Centre in Rotherham, linked to Science topic.

**Wednesday 5th February** - Year 5 curriculum showcase (after-school)

**Friday 14th February** - Spring 1 ends

**Monday 17th - Friday 21st February** - Half-term

**Monday 24th February** - Spring 2 begins

**Wednesday 26th February & Thursday 27th February** - Parents Evenings

**Tuesday 25th March** - Year 5 Mother's Day event

**Friday 4th April** - Last day of Spring term; Easter Egg competition

Any other information about dates and events that may get added to the calendar will be sent out to you via text message from the school office.