



Rise Park Primary and Nursery School
Head Teacher: Mrs Natasha Kelly B.Ed.Hons
Bestwood Park Drive West
Rise Park
Nottingham
NG5 5EL

17 June 2020

Tel: 0115 915 3775
admin@risepark.nottingham.sch.uk
www.riseparkprimaryschool.co.uk

Dear Parents/Carers,

I am so pleased to inform you that school will be opening for Y1 children on Monday the 22nd of June after receiving confirmation from the Local Authority. I have also sent another letter for you to look at and discuss with your child as to what the school and classroom will look like if you decide to return. There is also a video on the website under children then click gallery which Miss Lynch has produced to welcome back our Y6 children which your child would probably like to look at too as school is a very different place to when your child left in March.

Please could you email admin@risepark.nottingham.sch.uk or telephone school by 5pm on Thursday to confirm a place in the Y1 bubble.

If you have any queries or questions please do not hesitate to contact me

I am so looking forward to seeing you on Monday,

Yours sincerely

Natasha Kelly
Headteacher

Wednesday 17th June 2020

Dear Parents & Carers,

This letter will detail specifics for the planned re-opening to **Year 1** pupils from **Monday 22nd June**.

I hope this will help you – as a parent – come to an informed decision about whether you will be sending your child into school **from Monday 22nd June**. This is entirely your decision and as a school we will continue to support you whatever decision you come to. There will be no penalties for parents if they choose **not** to send their child into school at this time.

Our first priority is the safety and well-being of the children and staff, and in order to re-open safely we will need to make significant changes to the school day and 'normal' routines. These are some guidelines which will need to be in place when we reopen on Monday 22nd June.

School Routines when your child returns:

Class 'Bubbles'

- Children will be in small groups of 10.
- Children may **not** be with all of their friends.
- Teaching 'bubbles' will not be allowed to mix and will be kept separate throughout the day.
- **Teaching 'bubbles' cannot be changed. We will fill up a 'x bubble' and a 'y bubble.'** After these first 20 children are in, we will then fill a third bubble and a fourth if needed.
- Teaching 'bubbles' will always be taught by the same adults, wherever possible. There will be 2 adults in each 'bubble'.
- Bubbles will be led by Miss Allen and Mrs Mee/Mrs Meads. If the number of children attending rises, we introduce a new 'bubble'. Children may not be in their usual classroom, and each 'bubble' will use the same classroom throughout the day and week.
- Children will **wash their hands** before they enter school.
- We will talk to the children about social distancing and endeavour that activities we plan for support this thinking. However – we are a school. Your children are children and we make no guarantees about them being 2m apart at all times in their 'bubble'
- Each 'bubble' will have their own toilet.



What will school look like?

- Children's tables will be spaced out and their work station will be independent.
- Children will **enter school in a systematic way with 2m distancing clear / lining up on the playground** will also be clearly directed.
- The school environment is set up with a **one-way system**. Children will only move about the school in this direction with their 'bubble'.

- Classrooms are arranged with clear surfaces and soft furnishings / toys removed.
- Cleaning will take place throughout the day.
- **Each child will have a designated space** which is labelled to support tracing measures. They will all have a set of personal equipment provided. Pencil cases will not be allowed.
- **Your child will put all their belongings on the backs of their chair. They will not use pegs / coat hooks etc.**



Arrows around the outside of the school to indicate the one-way system. Arrows are spaced 2 metres apart.

How do I enter school?

- **Year 1 children MUST** enter through the gate onto the Key Stage Two playground (entrance nearest the zebra crossing). Movement around the outside of school is a one-way system with the exit gate being by Nursery. They will need to wash their hands prior to entering the classroom.
- Children will need to wear UNIFORM.
- We advise you wash your child's uniform every night.
- We advise children bring a water bottle. If they do not – they will be given a plastic disposable cup.



Entrance

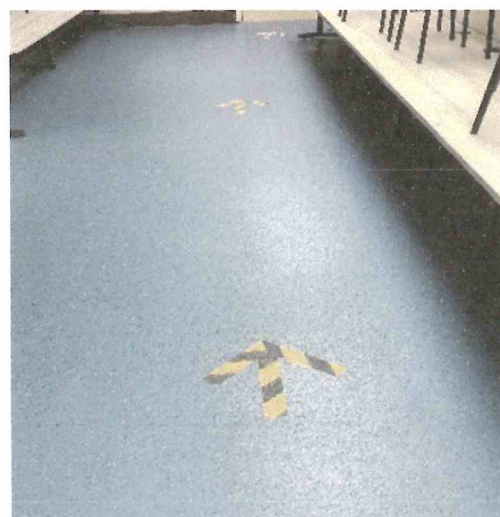


Exit



Dinners:

- You can choose to send your child in with a packed lunch or order (as usual) a grab bag via ParentPay. Your child will eat with their bubble and play with their bubble at lunchtime / breaktime.
- Children will eat in their classroom with their 'bubble'.

- **School will be open Monday-Thursday with Friday being closed to year 1 to allow teachers to plan and to give cleaning staff adequate time to deep clean the school. The school day will run with reduced hours** to allow us to stagger drop-offs, pick-ups, breaktimes and lunchtimes and to allow for additional cleaning.
- The expectation is that if you send your child to school, they will attend Monday-Thursday.



'X bubble' Miss Allen = 9:10am – 2:30pm

<p>'Y bubble' Mrs Mee/Mrs Meads= 9:20am – 2:45pm Arrival and collection times need to be prompt in order to avoid the 'bubbles' crossing over.</p> <ul style="list-style-type: none"> • There will be NO breakfast club provision 	
<ul style="list-style-type: none"> • Only one parent will be able to drop off or pick up their child outside of the classroom and parents will not be able to enter the school building unless in an emergency. • Parents and children must observe social distancing when coming to and from school and request that you stand behind the designated line when waiting to pick up your child. • At the end of the day, each 'bubble' will be dismissed and children must go home immediately 	
<ul style="list-style-type: none"> • There will be additional points for children to understand in our behaviour policy, e.g following requests around hygienic measures etc. This will be sent to you if you decide to send your child so you can look through them together • Children will wash their hands often throughout the day. • We will teach and go over certain hygiene routines. • We will have a daily PSHE session to support every child's emotional wellbeing. • We will be outdoors as much as possible. • We will encourage children to be doing as much physical exercise as we can. Any PE equipment used will be cleaned between sets of 'bubbles'. • Only trainers will be required for PE. 	
<ul style="list-style-type: none"> • Showbie will continue for the year 1 pupils who will not be back in school though it may not be the usual class teacher who will be responding to the work. • Teachers will NOT be able to respond to emails in the way they have been doing – the office will be in contact weekly with parents of children not attending school. 	
<ul style="list-style-type: none"> • There will be signage around our school to remind everyone of staying alert to coronavirus spread prevention. • Windows / external doors are open to increase ventilation. Send your child with a jumper. It can get cold! 	
<ul style="list-style-type: none"> • Our plans mean we are taking every possible step to follow government guidelines whilst ensuring we are acting with the safety of our pupils and staff at the heart of every decision we make. 	

A video showing what school will look has been put on the website under 'gallery.' Currently it is aimed at Year 6 but gives you an idea of how school will look when your child returns. This will help you see what a school day will look

like with these protective measures in place. Look at it with your child and talk to your child about how they are feeling. We have done this to reassure you and so you can make an informed decision about sending your child to school.

School after Monday 22nd June will be a different experience from when we broke up on Friday 20th March. The children's safety and well-being are our top priority, and all of our decisions about how we re-open will be based on the welfare and safety of the children and staff.

If you have further questions, please do get in touch.

If you would like to send your child to school on Monday 22nd June please email: admin@risepark.nottingham.sch.uk

We ask you do this by Thursday 18th June at 5pm. If you do NOT email back – we may not be able to have your child in school until the following week after opening as plans rely on staff and school being prepared.

Kind Regards,

Mrs Kelly (Headteacher)

QUESTIONS YOU MAY ASK:

Q) What if my child already attends skeleton school?

School will further open to Y1. This means that if your child is in skeleton school – they will now be able to access Year 1. They will NOT however be able to go into skeleton school any more. We are avoiding groups and bubbles mixing. So your child will have to come during the reduced Year 1 day. Speak to your child's class teacher if you have any questions on this. You may have other children attending skeleton school. There will be a "pod" system which will help this but this must only be used with prior arrangement with staff.

Q) What if I decide not to send my child in on the wider reopening but after a few weeks, I do want them to come in?

YOU CANNOT "JUST SEND YOUR CHILD INTO SCHOOL" School MUST be aware your child is coming. Depending on staffing – you may have to wait until the start of a week – a Monday for your child to start school so we can ensure we have staff ready and classrooms ready. School and home MUST keep in contact about any decisions you make.

Q) What if my child is sick? Do I keep them off school?

Yes – as you usually would. Call school if you are unsure. If you feel your child has any symptoms of coronavirus – follow this advice:

Staff and pupils who report the following symptoms remain at home for 7 days. Their household members must remain at home for 14 days:

- a high temperature – this means you feel hot to touch on your chest or back (you do not need to measure your temperature)
- a new, continuous cough – this means coughing a lot for more than an hour, or 3 or more coughing episodes in 24 hours (if you usually have a cough, it may be worse than usual)

All staff and pupils who are attending a school will have access to a test if they display symptoms of coronavirus, they are encouraged to get tested in this scenario <https://www.gov.uk/guidance/coronavirus-covid-19-getting-tested>

Where the pupil or staff member tests negative, they can return to their setting and the fellow household members can end their self-isolation.

Where the pupil tests positive, the rest of their class or group within their childcare or education setting are sent home and advised to self-isolate for 14 days. The other household members of that wider class or group do not need

to self-isolate unless the child, young person or staff member they live with in that group subsequently develops symptoms.

Q) What if my child or someone else in their bubble shows coronavirus symptoms?

We have a designated “sick bay” in school. They will be taken there and you will be asked to collect them and contact NHS / self-isolate. Tests will be available to you.

Our school is also well stocked in PPE for staff. If your child has suspected coronavirus symptoms – a staff member will wear PPE whilst they administer care.



Q) Does my child need their PE kit in school? Will they be getting changed for PE?

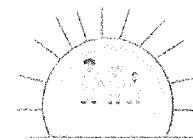
No. Your child will not need PE kit – just trainers.

Q) What if my child does not follow instructions e.g. following one way system / not washing their hands when asked to?

I hope this will not happen. However, if a child is not following instructions, you will be asked to collect them and consequences will apply as usual.



Annex A: Behaviour principles to follow during the wider opening of school.



Arrival and departure:

- Pupils in each class bubble will have a different arrival and departure time to ensure that they do not have contact with each other.
- Pupils will be able to wash their hands prior to entering the classroom.
- Pupils will socially distance at all times of the day as much as possible, including arrival and departure.
- There will be a one-way system with pupils arriving via the KS2 playground gate and leaving via the Nursery gate.
- Pupils will put their bags and coats on the backs of their chairs to avoid the cloakroom.

Hand washing and sanitising:

- Pupils will be required to wash their hands or sanitise them as they enter and leave the building; if they cough or sneeze; before or after they eat; after going to the toilet etc.
- Pupils will wash their hands for at least 20 seconds or use hand sanitiser.
- Pupils will use paper towels to dry their hands, not the hand dryers.

Socialising at school:

- Pupils will only socialise with members of their class bubble.
- Pupils will maintain social distancing within their class bubble.

Moving around school:

- Pupils will follow the one-way system around school.
- Pupils will maintain social distancing around school.
- Within the classroom, pupils will have one seat which they will stay in – seats will not swapped and desks are spaced far apart. They will adhere to social distancing rules within the classroom and put their hand up if they need to move around.

Expectations around coughing and sneezing:

- If a pupil coughs or sneezes, they will wash their hands or sanitise them thoroughly afterwards.
- If a pupil coughs or sneezes, they will try to do so into a tissue and then bin it immediately in the pedal bin.
- Pupils will try to avoid touching their face.

Symptoms of coronavirus:

- Pupils will be re-educated about the symptoms of coronavirus and will tell an adult immediately if they have one of the symptoms who will take them to the sick bay in Mr Kelly's room to isolate them.
- If a pupil needs the toilet whilst in the sick bay, they will use the disabled toilet and thoroughly wash their hands afterwards.

Sharing equipment:

- Pupils will have their own set of school equipment on their desk which they must use.
- Pupils will not touch anyone else's equipment.
- Pupils will not share their own equipment.
- Pupils will not be allowed to bring pencil cases into school.
- Pupils can bring their own water bottle into school to keep on their desk. No pupil will be allowed to touch a water bottle that is not theirs. Pupils will have disposable cups to drink out of if they forget their water bottle. These will be immediately binned after they have used them.

Break and lunch times:

- Each class bubble will have staggered break and lunch times so that pupils do not come into contact with pupils from another class bubble.
- Pupils will wash their hands thoroughly before eating and will dispose of all waste items immediately in the bins provided.
- Pupils will maintain social distancing as much as possible at break and lunch times.
- Pupils will not use the gym equipment on the playground.

Toilets:

- Only one pupil may use the toilet at a time.

- Pupils will thoroughly wash their hands after going to the toilet and dry them with paper towels.
- Pupils from each class bubble will use the toilet nearest to their classroom – there will be no girls' and boys' toilets as only one pupil will be allowed to use the toilet at a time.
- At break and lunch times, pupils will continue to use the same toilet and only one pupil will be allowed in at a time.

Coughing or spitting:

- If a pupil coughs or spits at or towards anyone else, they will be sent home as they are endangering other pupils and members of staff.

Remote education:

- Pupils who do not attend school will still be able to access work through Showbie though a different teacher may be responding to the children's work, not the usual class teacher.
- Pupils at home should continue to complete their work regularly.
- Work packs will continue to be sent out to children who cannot access remote learning.

Rewards and sanctions:

- The behaviour policy for rewards and sanctions will remain the same and be adhered to by all stakeholders.
- If a pupil cannot adhere to social distancing rules, they will be sent home as they are endangering other pupils and members of staff.